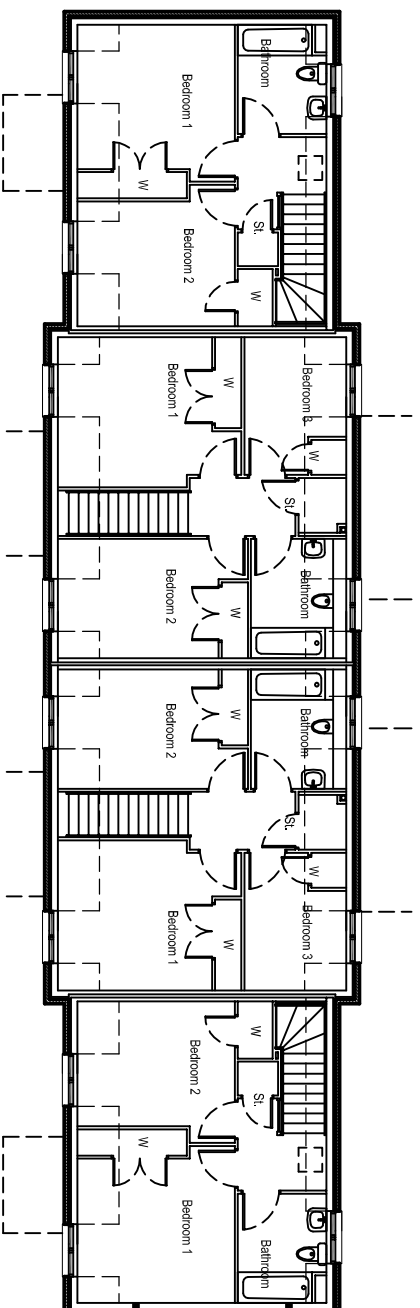


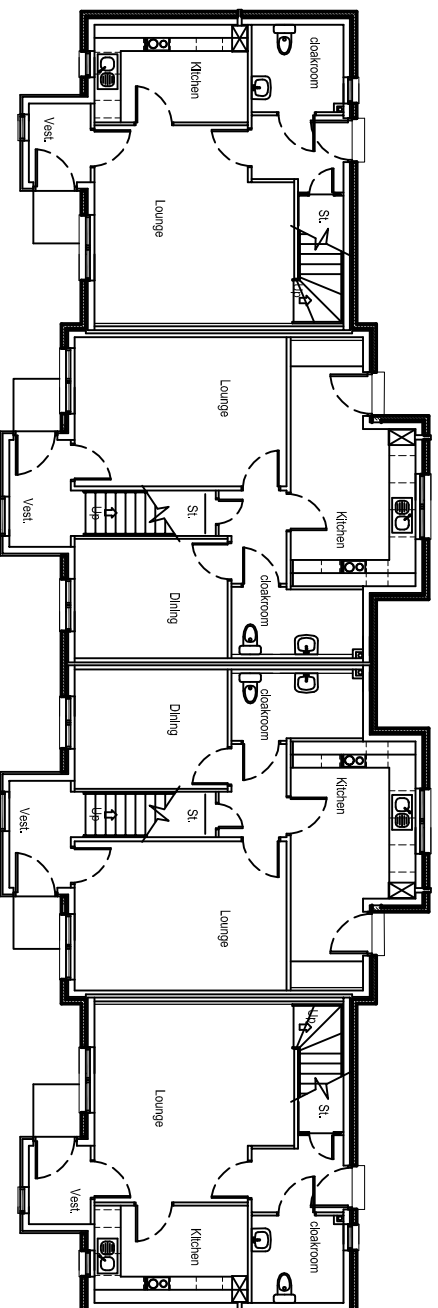
# Braiklay Croft Development



First Floor Plan

## Two Bedroom

Room Sizes	metric	imperial
Lounge	4.51 x 4.54	14'10" x 14'11"
Kitchen	2.20 x 3.48	7'3" x 11'5"
Bedroom 1	3.27 x 3.57	10'9" x 11'8"
Bedroom 2	2.83 x 3.57	9'3" x 11'8"



Ground Floor Plan

## Three Bedroom

Room Sizes	metric	imperial
Lounge	3.38 x 4.82	11'1" x 15'10"
Kitchen	5.66 x 2.83	18'7" x 9'3"
Dining	2.71 x 3.48	8'11" x 11'5"
Bedroom 1	3.41 x 3.50	11'2" x 11'6"
Bedroom 2	2.71 x 3.65	8'11" x 12'
Bedroom 3	3.13 x 2.30	10'3" x 7'7"