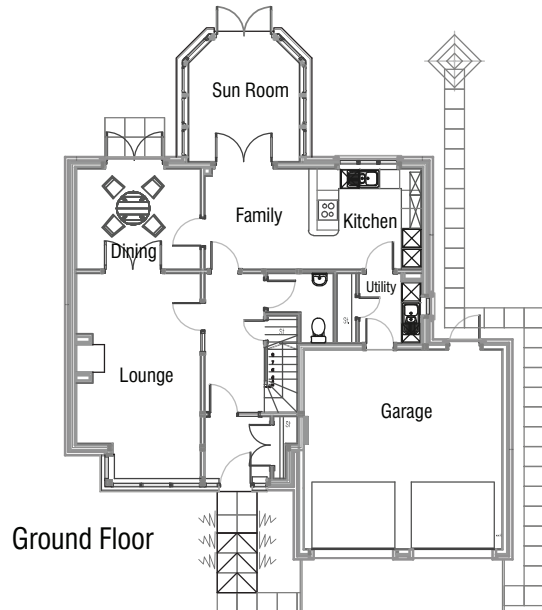
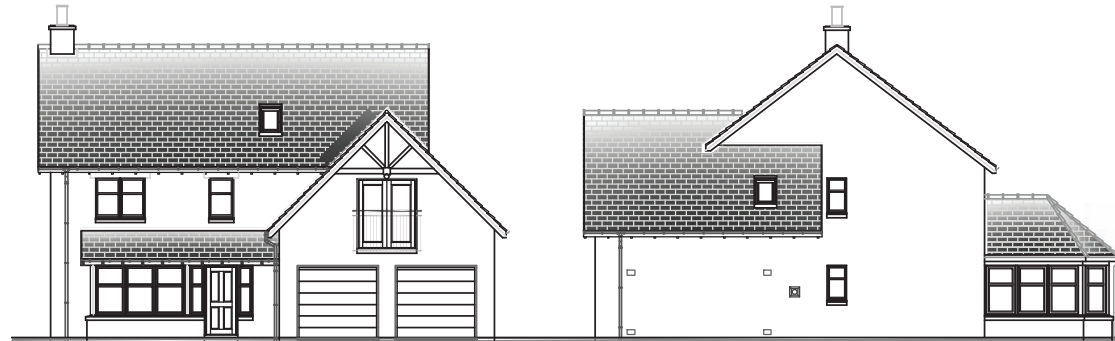
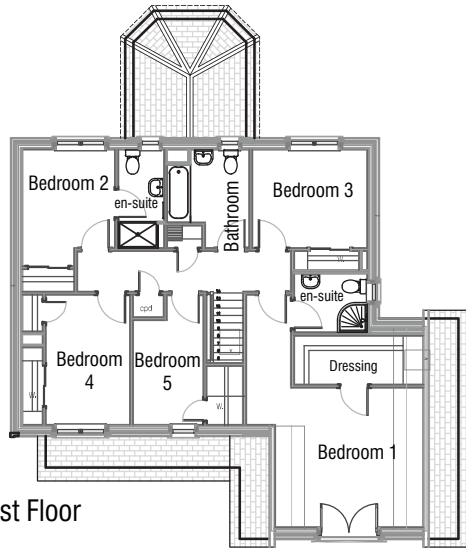


HOUSE TYPE D



House Type D

Produced as a show house, this very well designed and laid out two storey home has five bedrooms, lounge, dining room and a lovely conservatory.

Gross internal floor area
200m² (exc. double garage)

The main accommodation comprises

Lounge	(3.80m x 5.15m)
Dining	(3.80m x 3.00m)
Kitchen / Family	(6.60m x 3.00m)
Sun Room	(3.30m x 3.00m)
Bedroom 1	(4.50m x 7.00m)
Bedroom 2	(4.30m x 3.00m)
Bedroom 3	(3.50m x 3.00m)
Bedroom 4	(3.25m x 3.90m)
Bedroom 5	(2.15m x 3.15m)

All sizes are approximate and are taken to the minimum internal dimensions

Bedroom sizes include en-suites and wardrobes where appropriate

